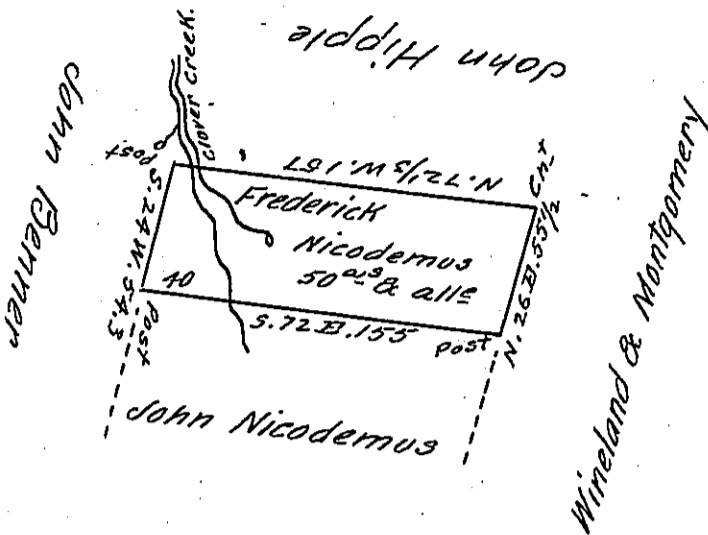


54.
39
93.3



55 1/2
10
125 1/2

Situate on the Waters of Clover Creek in Morris's Cove in Woodberry Township Bedford County - Contain'g 50^{ac} & the usual allowance of six Per Cent for Roads &c. Surveyed for John Nicodemus the 2nd day of September 1823 on Warrant in the name of Frederick Nicodemus for 50^{ac} dated the 4th day of March 1823.

John Wolf, D.S.

To Samuel Cochran Esq.

Surveyor General.

IN TESTIMONY that the above is a copy of the original remaining on file in the Department of Internal Affairs of Pennsylvania, made conformably to an Act of Assembly approved the 16th day of February, 1833, I have hereunto set my Hand and caused the Seal of said Department to be affixed at Harrisburg, this nineteenth day of April 1906

Joseph P. ...
Secretary of Internal Affairs.